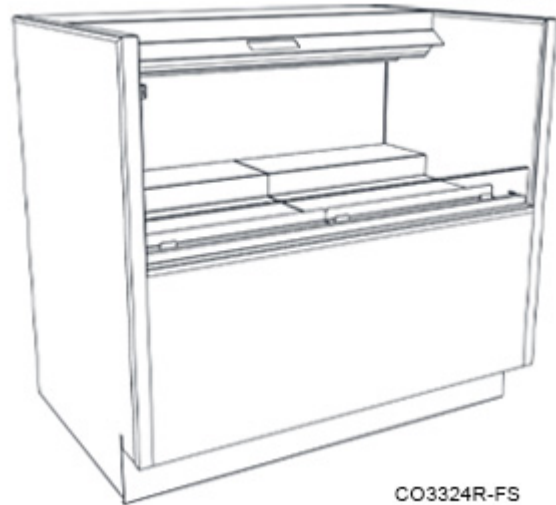


- **CO3324R** 36-1/4"L x 24-1/8"D x 33-3/4"H
- **CO4324R** 47-1/4"L x 24-1/8"D x 33-3/4"H
- **CO5324R** 59-1/4"L x 24-1/8"D x 33-3/4"H
- **CO6324R** 71-1/4"L x 24-1/8"D x 33-3/4"H

Shown w/ optional risers



CO3324R-FS

### Included

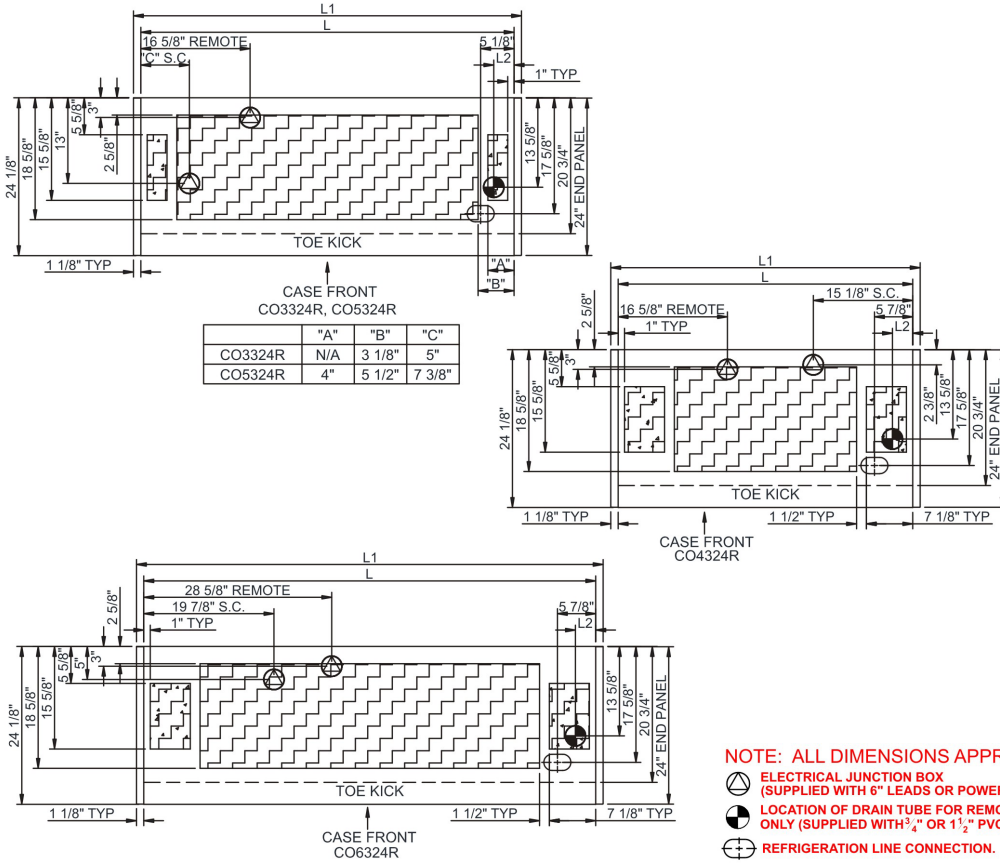
- NOTE: ADD SUFFIX TO MODEL # LISTED ABOVE BASED ON MODEL CONFIGURATION CHOSEN BELOW
- Breeze~E (Type-II) w/ EnergyWise s/c refrigeration (rear access)
- Blue Fin coated coil
- Casters (non-locking) w/ levelers
- Compressor air rear intake, front discharge at toe kick. Front and rear panels cannot be blocked. Must remain 4" from wall
- Condensate pan (self-contained refrig. only)
- Integrated average product temperature of 40°F or less
- LED 3500K top light(s)
- One piece formed ABS plastic tub
- One year parts & labor; 5 year compressor warranty

Specify	Standard Features	Additional Options
<b>MODEL CONFIGURATION</b>	<ul style="list-style-type: none"> <li>• Freestanding (-FS) Counter ht. 33-3/4"H; freestanding unit w/2 end panels. Top &amp; front panels positioned between end panels</li> </ul>	<ul style="list-style-type: none"> <li>• Counter height (-CH) Counter ht. 33-3/4"H; Top &amp; front panels extended over end panels to blend w/adj. counters (supplied by others)</li> <li>• Undercounter height (-UC) Undercounter ht. 32-3/4"H; front panel extends over end panels to blend w/adj. counters (supplied by others). Counter surface (supplied by others) extends over top of unit</li> </ul>
<b>EXTERIOR COLOR</b>	<ul style="list-style-type: none"> <li>• Laminated (non-premium) Confirm pattern/grain direction</li> </ul>	<ul style="list-style-type: none"> <li>• Laminated (premium) Confirm pattern/grain direction</li> <li>• Stainless steel exterior</li> </ul>
<b>INTERIOR COLOR</b>	<ul style="list-style-type: none"> <li>• Black interior</li> </ul>	<ul style="list-style-type: none"> <li>• Stainless steel interior</li> </ul>
<b>END PANEL LEFT</b>	<ul style="list-style-type: none"> <li>• Square full end panel w/mirror interior (metal edge matches interior color)</li> </ul>	<ul style="list-style-type: none"> <li>• Curved end panel w/mirror (-FS model only)</li> <li>• No end panel w/ synchronized defrost</li> </ul>
<b>END PANEL RIGHT</b>	<ul style="list-style-type: none"> <li>• Square full end panel w/mirror interior (metal edge matches interior color)</li> </ul>	<ul style="list-style-type: none"> <li>• Curved end panel w/mirror (-FS model only)</li> <li>• No end panel w/ synchronized defrost</li> </ul>
<b>EXTERIOR BACK PANEL</b>	<ul style="list-style-type: none"> <li>• Solid back panel, black</li> </ul>	<ul style="list-style-type: none"> <li>• Solid back panel, stainless steel</li> </ul>
<b>ELECTRICAL CONNECT</b>	<ul style="list-style-type: none"> <li>• 6' Straight blade power cord (self-cont.)</li> </ul>	<ul style="list-style-type: none"> <li>• 6' Locking power cord (self-cont.)</li> <li>• Electrical leads (remote)</li> </ul>
<b>REFRIGERATION</b>	<ul style="list-style-type: none"> <li>• Breeze~E (Type-II) w/ EnergyWise s/c refrigeration (rear access)</li> </ul>	<ul style="list-style-type: none"> <li>• Breeze~E (Type-II) w/ EnergyWise s/c refrigeration (front access)(w/ 2"D open rear wall spacer)</li> <li>• Note: Remote doesn't incl Conds unit. Floor drain reqd.</li> <li><sup>1</sup> • Remote w/thermostat, solenoid &amp; TXV (front access)</li> <li><sup>2</sup> • Remote w/thermostat, solenoid &amp; TXV (rear access)</li> </ul>
<b>MISCELLANEOUS</b>		<ul style="list-style-type: none"> <li>• Remote monitoring package (n/a w/remote ref.)</li> <li>• Second year parts &amp; labor warranty (excludes compressor)</li> </ul>
<b>ACCESSORIES</b>		<ul style="list-style-type: none"> <li>• 2"D Full chimney rear wall spacer (front access only)</li> <li>• 2"H, 6.5"D Display riser(s) for lower display</li> <li>• Night curtain, retractable, non-locking</li> <li>• Removable solid security cover, locking</li> </ul>

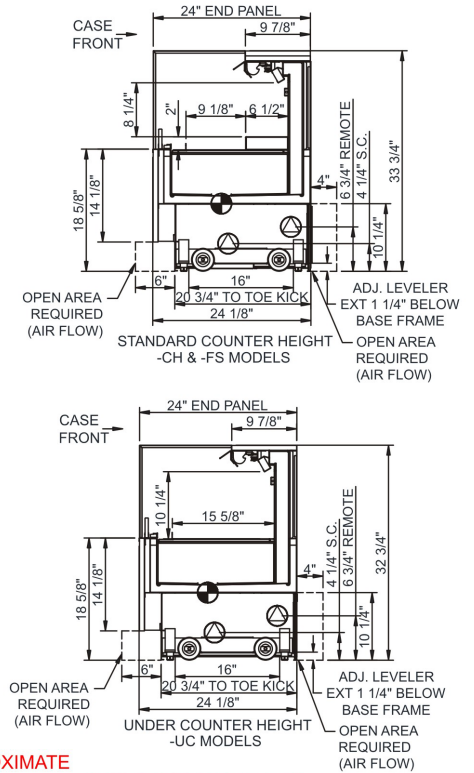
Option Notes: 1 - See tech spec for remote load reqmts  
2 - See tech spec for remote load reqmts

<b>Intended Environment:</b> Type II - Designed to operate in ambient conditions of 80°F and 60% relative humidity unless noted otherwise in system information below.		
<b>Zone</b>	<b>Intended Product To Be Displayed</b>	<b>Warmest Avg Prod Temp ° F</b>
1	Packaged refrigerated products	40

### PLAN VIEW



### SIDE VIEW



**NOTE: ALL DIMENSIONS APPROXIMATE**

- ELECTRICAL JUNCTION BOX (SUPPLIED WITH 6\"/>
- LOCATION OF DRAIN TUBE FOR REMOTE REF. ONLY (SUPPLIED WITH 3/4\"/>
- REFRIGERATION LINE CONNECTION.
- REMOTE FLOOR SINK & UTILITIES ACCESS AREA.
- SELF-CONTAINED CASE SERVICE ACCESS AREA.
- DRY CASE SERVICE ACCESS AREA.

### Model Technical Specifications

Model	L"	L1"	L2"	System Circuit Volts		Phs	Freq	Amps ***	Watts	Wires	NEMA Plug	SST	Conv. Rack BTU/H	Para. Rack BTU/H	Est Wt	
				Circuit #1	110-120											
CO3324R	34.00	36.25	2.38	Remote(Type II)	Circuit #1	110-120	1	60	1.20	46	2+G	Leads Multiple	20.00	1469	1360	500
				Self-Contained (R513A)	Circuit #1	110-120	1	60	12.00	1,050	2+G	5-15P or L5-15P	N/A	N/A	N/A	
CO4324R	45.00	47.25	3.13	Remote(Type II)	Circuit #1	110-120	1	60	1.32	66	2+G	Leads Multiple	20.00	1944	1800	600
				Self-Contained (R513A)	Circuit #1	110-120	1	60	12.00	1,053	2+G	5-15P or L5-15P	N/A	N/A	N/A	
CO5324R	57.00	59.25	3.13	Remote(Type II)	Circuit #1	110-120	1	60	1.60	76	2+G	Leads Multiple	20.00	2592	2400	700
				Self-Contained (R513A)	Circuit #1	110-120	1	60	16.00	1,204	2+G	5-20P or L5-20P	N/A	N/A	N/A	
CO6324R	69.00	71.25	3.13	Remote(Type II)	Circuit #1	110-120	1	60	1.64	85	2+G	Leads Multiple	20.00	2938	2720	1,000
				Self-Contained (R513A)	Circuit #1	110-120	1	60	16.00	1,211	2+G	5-20P or L5-20P	N/A	N/A	N/A	

\*\*\* Does not include electric defrost on freezer models.

#### Regulatory Approvals:

All Models  
 Accordance with AHRI Std 1200  
 ETL Listed to UL 471  
 ETL Listed to CAN/CSA 22.2 No. 120  
 ETL Sanitation to NSF/ANSI 7



In Accordance with  
**AHRI Std 1200**

**DOE 2017**  
 Energy Efficiency  
 Compliant

#### Important Notes:

- ELECTRICAL NOTE: If GFCI is required, a GFCI breaker MUST be used in lieu of a GFCI receptacle
- 33" Minimum entry door clearance required (w/out shipping skid)
- Performance issues (product temperatures, water on floor, etc.) caused by adverse conditions are not covered by warranty.
- Keep unit at least 15' from exterior doors, overhead HVAC vents, or any air curtain disruption.
- Do not expose unit to direct sunlight or any heat source (ovens, fryers, etc.).

**⚠ WARNING:** This product can expose you to chemicals, including Urethane (Ethyl Carbamate), which are known to the State of California to cause cancer and birth defects or other reproductive harm. For more information go to [www.P65Warnings.ca.gov](http://www.P65Warnings.ca.gov).

Note: Information is subject to change at any time. Visit [www.structuralconcepts.com](http://www.structuralconcepts.com) for the most current specs.

21868167 Revised 1-25-2022